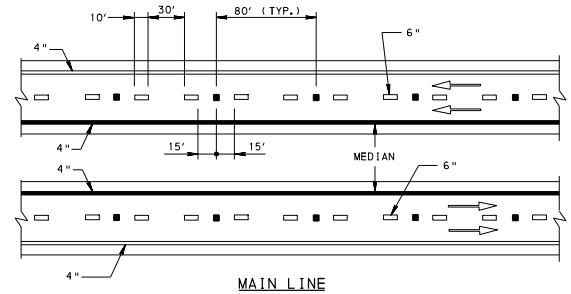
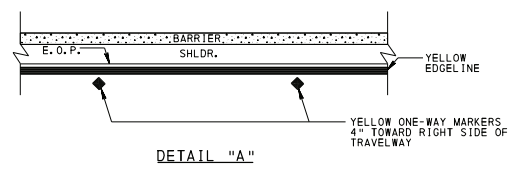


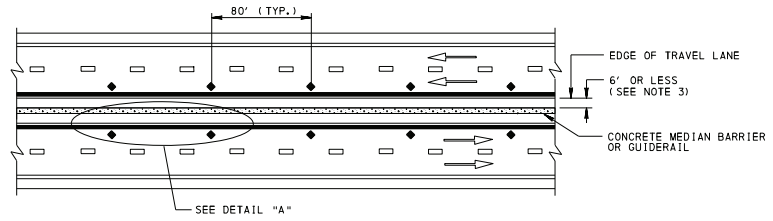
EXIT GORE AREA



MAIN LINE



DETAIL "A"



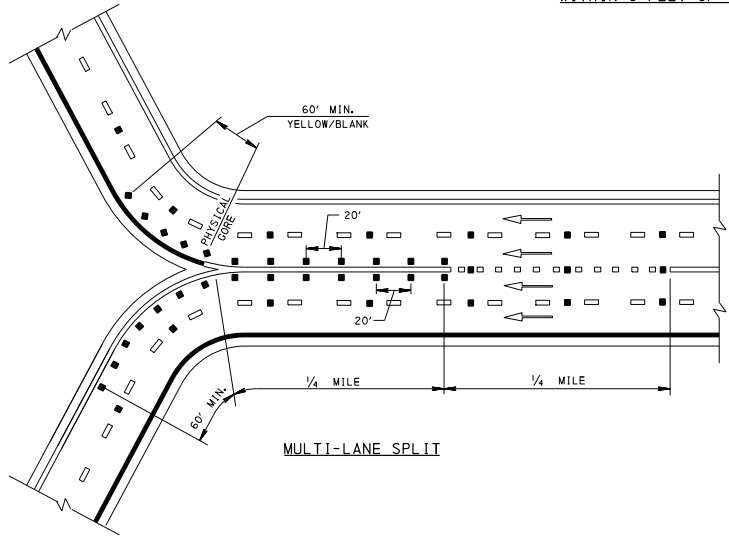
CONCRETE MEDIAN BARRIER OR GUIDERAIL WITHIN 6 FEET OF TRAVEL LANE

LEGEND

- TWO-WAY MARKER WITH WHITE/BLANK REFLECTOR
- ◆ TWO-WAY MARKER WITH YELLOW/BLANK REFLECTOR
- ▲ TWO-WAY MARKER WITH WHITE/RED REFLECTOR
- ▲ TWO-WAY MARKER WITH YELLOW/RED REFLECTOR
- WHITE
- YELLOW
- BROKEN WHITE
- DIRECTION OF TRAVEL

NOTES:

1. MATERIAL AND WORKMANSHIP IN ACCORDANCE WITH PENNSYLVANIA DEPARTMENT OF TRANSPORTATION PUBLICATION 408, OR AS INDICATED OR DIRECTED.
2. PLACE MARKERS ALONG A LANE LINE (BROKEN LINE) MIDWAY BETWEEN THE PAINTED PORTIONS.
3. PLACE MARKERS ALONG AN EDGE OR CHANNELIZING LINE WITH NEAR EDGE OF MARKER CASTING 4" FROM NEAR EDGE OF PAINTED LINE, WHEN CONCRETE MEDIAN BARRIER OR GUIDERAIL IS WITHIN 6' OF TRAVEL LANE.
4. INSTALL MARKERS 4" MIN. FROM ANY PAVEMENT SEAM, JOINT OR EDGE.
5. SEE SHEET 4 FOR MARKER DETAILS.
6. FOR MARKER SPACING ON CURVES SEE SHEET 3.



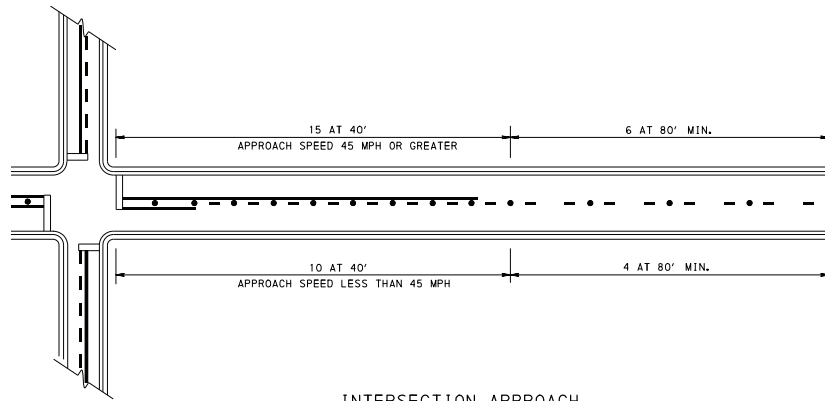
MULTI-LANE SPLIT

INSTALLATION PATTERNS - FREEWAYS & EXPRESSWAYS

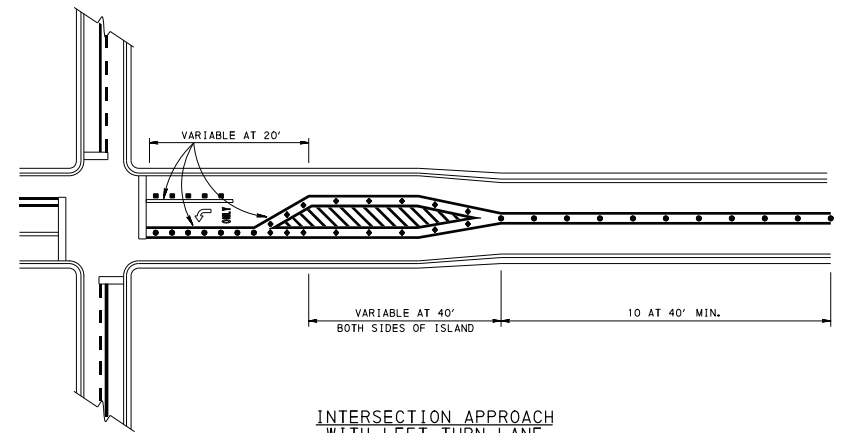
COMMONWEALTH OF PENNSYLVANIA
DEPARTMENT OF TRANSPORTATION
BUREAU OF MAINTENANCE AND OPERATIONS

SNOWPLOWABLE RAISED
PAVEMENT MARKERS

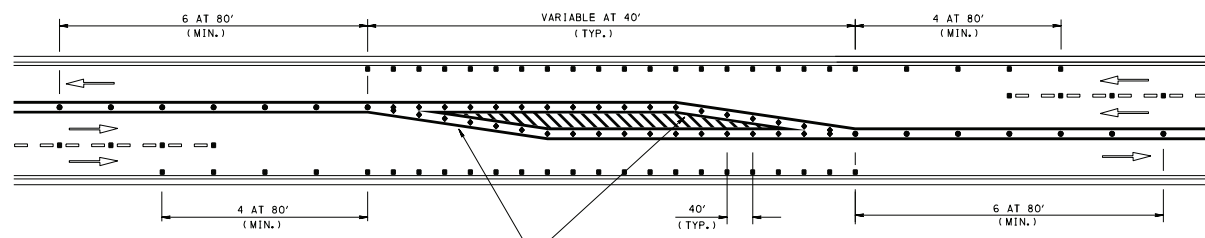
RECOMMENDED XXX.XX, XXXX	RECOMMENDED XXX.XX, XXXX	SHT. 1 OF 4
CHIEF, TRAFFIC ENGINEERING AND PERMITS SECTION	CHIEF, HIGHWAY SAFETY AND TRAFFIC OPERATIONS DIVISION	TC-8602



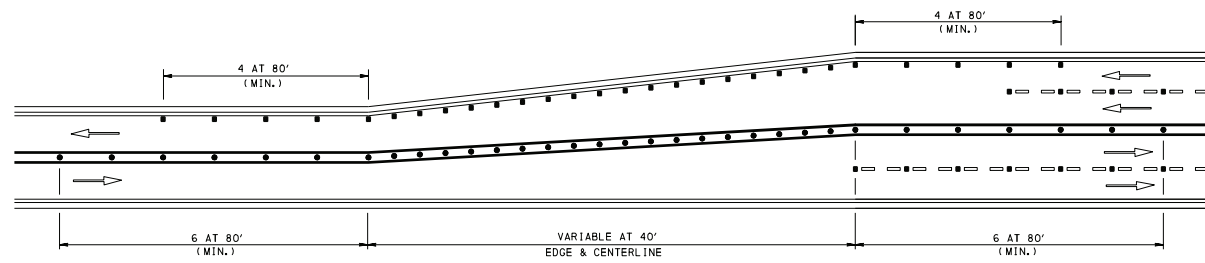
INTERSECTION APPROACH



INTERSECTION APPROACH WITH LEFT-TURN LANE



TWO LANES TO ONE LANE



FOUR LANES TO TWO LANES
TRANSITION

LEGEND

- TWO-WAY MARKER WITH WHITE/BLANK REFLECTOR
- TWO-WAY MARKER WITH YELLOW/BLANK REFLECTOR
- TWO-WAY MARKER WITH YELLOW/YELLOW REFLECTOR
- WHITE
- YELLOW
- - - BROKEN WHITE
- - - BROKEN YELLOW
- ➔ DIRECTION OF TRAVEL

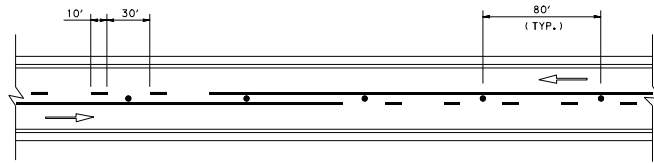
NOTES:

1. SEE SHEET 3 FOR ADDITIONAL NOTES.
2. FOR MARKER SPACING ON CURVES SEE SHEET 3.

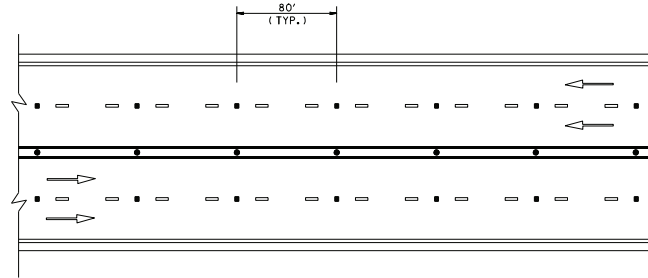
COMMONWEALTH OF PENNSYLVANIA
DEPARTMENT OF TRANSPORTATION
BUREAU OF MAINTENANCE AND OPERATIONS

SNOWPLOWABLE RAISED
PAVEMENT MARKERS

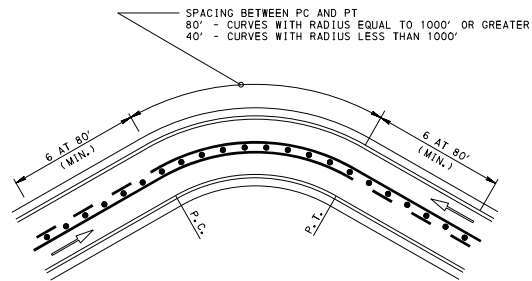
RECOMMENDED XXX, XX, XXXX	RECOMMENDED XXX, XX, XXXX	SHT. 2 OF 4
CHIEF, TRAFFIC ENGINEERING AND PERMITS SECTION	CHIEF, HIGHWAY SAFETY AND TRAFFIC OPERATIONS DIVISION	TC-8602



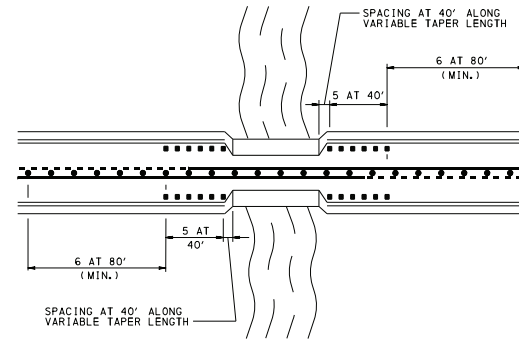
TWO-LANE ROADWAY



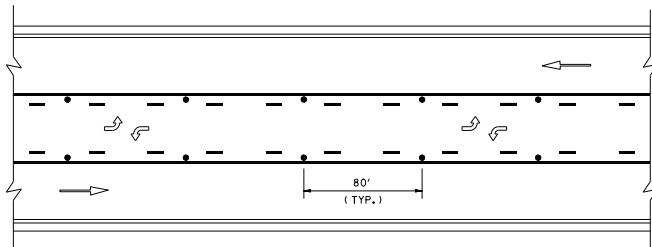
UNDIVIDED FOUR LANES



CURVES



NARROW BRIDGE
ACROSS STRUCTURE USE BARRIER-MOUNT DELINEATORS



CENTER LANE LEFT-TURN ONLY

LEGEND

- TWO-WAY MARKER WITH WHITE/BLANK REFLECTOR
- TWO-WAY MARKER WITH YELLOW/YELLOW REFLECTOR
- WHITE
- YELLOW
- - - BROKEN WHITE
- - - BROKEN YELLOW
- ➔ DIRECTION OF TRAVEL

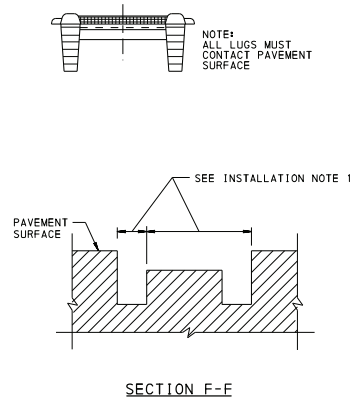
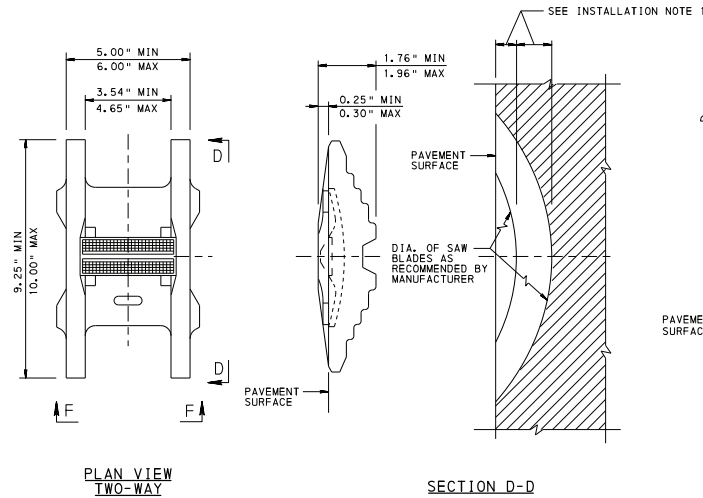
NOTES:

1. MARKERS INSTALLED AT THE DOUBLE YELLOW CENTER LINE SHALL BE PLACED BETWEEN THE TWO PAINTED LINES. MARKERS SHALL NOT BE PLACED WITHIN THE LIMITS OF THE PAINTED LINES EXCEPT WHERE LINES DEVIATE VISIBLY FROM THEIR CORRECT ALIGNMENT, AND THEN ONLY WITH THE APPROVAL OF THE ENGINEER.
2. PLACE MARKERS INSTALLED ALONG A LANE LINE (BROKEN LINE) MIDWAY BETWEEN THE PAINTED PORTION.
3. PLACE MARKERS ALONG AN EDGE OR CHANNELIZING LINE WITH THE NEAR EDGE OF THE MARKER CASTING 1" MAXIMUM FROM THE NEAR EDGE OF THE PAINTED LINE.
4. SPACE MARKERS INSTALLED AT THE CENTERLINE AT 80' UNLESS OTHERWISE SHOWN ON THE DRAWINGS. AT LOCATIONS IDENTIFIED AS FOG AREAS OR AREAS WITH A HIGH INCIDENCE OF HEAD-ON OR SIDESWIPE CRASHES, SPACE THE CENTERLINE MARKERS AT 40'.

COMMONWEALTH OF PENNSYLVANIA
DEPARTMENT OF TRANSPORTATION
BUREAU OF MAINTENANCE AND OPERATIONS

SNOWPLOWABLE RAISED
PAVEMENT MARKERS

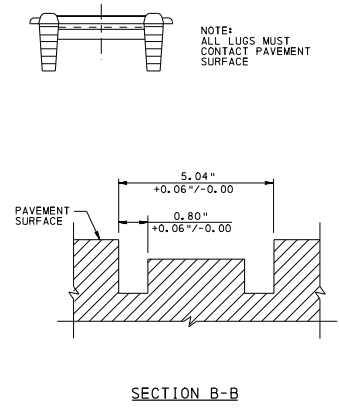
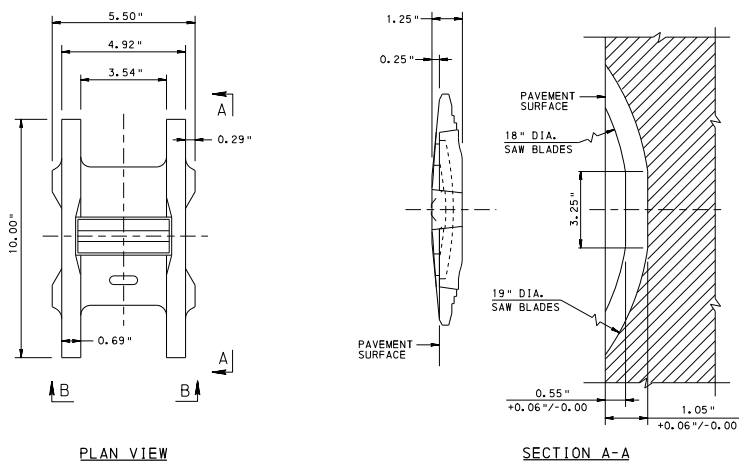
RECOMMENDED XXX.XX, XXXX	RECOMMENDED XXX.XX, XXXX	SHT. 3 OF 4
CHIEF, TRAFFIC ENGINEERING AND PERMITS SECTION	CHIEF, HIGHWAY SAFETY AND TRAFFIC OPERATIONS DIVISION	TC-8602



RAISED PAVEMENT MARKERS

INSTALLATION NOTES:

1. SAW CUT TO DIMENSIONS RECOMMENDED BY MANUFACTURER.
2. INSPECT SAW CUT FOR PROPER FIT OF THE MARKER.
 - PROVIDE APPROXIMATELY 0.125" CLEARANCE (SIDE-TO-SIDE MOVEMENT) FOR THE CASTING WHEN INSERTED INTO THE CUT.
 - INSTALL MARKER WITH ALL LEVELING LUGS IN CONTACT WITH THE PAVEMENT.
 - INSURE THE LEADING EDGES OF THE CASTING LIE BELOW THE PAVEMENT SURFACE.
3. SAW CUT AREAS TO BE DRY AND FREE OF MATERIAL THAT ADVERSELY AFFECTS THE ADHESIVE BOND.
4. INSTALL THE MARKERS WITH TWO-COMPONENT EPOXY ADHESIVE THAT MEETS AASHTO STANDARD SPECIFICATION M237 AND CLASSIFIED AS TYPE IV, BY FIRST FILLING THE SAW CUT TO WITHIN APPROXIMATELY 0.375" OF PAVEMENT SURFACE AND THEN PLACING THE MARKER BY HAND INTO THE EPOXY FILLED SAW CUT. AFTER PLACEMENT OF MARKER, MAKE THE EPOXY FLUSH OR SLIGHTLY BELOW PAVEMENT SURFACE. NO EPOXY SHOULD OBSCURE OR BLOCK THE LENS.



BRIDGE DECK MARKER

COMMONWEALTH OF PENNSYLVANIA
DEPARTMENT OF TRANSPORTATION
 BUREAU OF MAINTENANCE AND OPERATIONS

SNOWPLOWABLE RAISED PAVEMENT MARKERS

RECOMMENDED XXX.XX, XXXX	RECOMMENDED XXX.XX, XXXX	SHT. 4 OF 4
CHIEF, TRAFFIC ENGINEERING AND PERMITS SECTION	CHIEF, HIGHWAY SAFETY AND TRAFFIC OPERATIONS DIVISION	TC-8602